

BACKGROUND

The CFO of a logistics SME recognised the growing importance of cyber security, especially in light of recent cyberattacks on industry competitors. Although the company maintained an ongoing relationship with their Managed Service Provider (MSP), they had not conducted a formal risk assessment or security testing. Seeking expert guidance, the CFO engaged Cyber Collab to evaluate their current cyber security posture and identify areas for improvement.

CHALLENGES IDENTIFIED

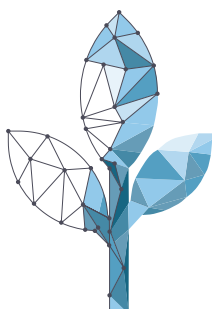
Cyber Collab conducted a Cyber Health Check to assess the organisation's culture, controls and environment. The Cyber Health Check Service revealed several critical issues:

- The company likely held sensitive data, such as credit card information and tax file numbers, without clear strategies to safeguard it.
- The website and certain key applications were outdated and unpatched.
- Vulnerabilities within the network increased the risk of unauthorised access.

RECOMMENDATIONS

Cyber Collab provided a set of actionable recommendations to strengthen the client's cyber security posture:

- 1. Engage with the MSP:**
Immediately address vulnerabilities by patching outdated applications and systems.
- 2. Implement Penetration Testing:**
Establish a program for regular internal and external penetration testing to identify and address risks proactively.
- 3. Adopt the Australian Essential Eight Framework:**
Use this framework as a foundation for continuous improvement in information and cyber security.



OUTCOMES

The Client is implementing the recommendations, working closely with their MSP to address immediate vulnerabilities and establish ongoing security protocols. Key outcomes include:

- Enhanced data protection measures, particularly for sensitive information.
- Regular testing and updates to mitigate risks associated with outdated applications and systems.
- Adoption of the Essential Eight framework, providing a clear roadmap for continued cyber security maturity.

CONCLUSION

By taking a structured and proactive approach, the CFO and Board have confidence that their cyber security risks are being effectively managed. The Cyber Health Check Service has provided the organisation with both a benchmark and a clear path forward, ensuring resilience against potential cyber threats.

The Cyber Collab Cyber Health Check Service assists organisations in identifying vulnerabilities, aligning them with best practices and building a robust strategy for long-term security.

If your organisation is looking to strengthen its cyber security posture, Cyber Collab is here to guide you every step of the way.



Contact us today.

Chris Watson
CEO

T: +61 7 3544 4700

M: +61 (0) 437 634 077

chris.watson@cybercollab.au

v1/0125