

# CYBER HEALTH CHECK SERVICE CASE STUDY: IDENTIFYING ORGANISATIONAL CYBER SECURITY RISKS



## BACKGROUND

The Board of a professional services firm with approximately 30 employees identified cyber security as a growing concern. While the Board exhibited a general awareness of cyber security issues, they recognised that their existing approach lacked a comprehensive framework to address risks and implement improvements. They sought to evaluate their current vulnerabilities, benchmark against industry best practices and develop a strategic plan for enhancement.

## CHALLENGES IDENTIFIED

The firm engaged Cyber Collab to conduct a Cyber Health Check. This assessment focused on evaluating the organisation's cyber security culture, controls and overall technology environment.

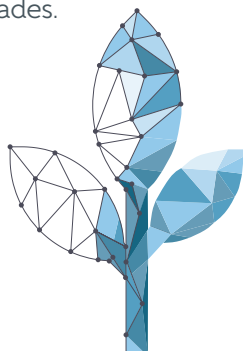
During the Cyber Health Check Service, it became evident that while the Board had a strong working relationship with their Managed Service Provider (MSP), the firm had not performed a formal risk or threat assessment. This oversight led to an ad hoc, reactive approach to cyber security challenges, resulting in inefficiencies in both time and cost.

## RECOMMENDATIONS

The Cyber Health Check Service highlighted the need for a structured approach to cyber security. Key recommendations included:

- **Risk and Threat Assessment:**  
Undertaking a comprehensive evaluation to identify and define potential threats and risks.
- **Holistic Cyber Security Strategy:**  
Developing an integrated strategy to address identified risks and establish clear priorities.
- **Budget Allocation:**  
Ensuring sufficient funding to support the cyber security strategy, including training, testing and technology upgrades.

The firm adopted these recommendations, creating a clear strategy which they shared with their MSP to drive targeted improvements.



## OUTCOMES

The firm now engages proactively with their MSP to monitor current threats and industry trends.

They have also implemented:

- A robust program to update policies and procedures.
- A regular testing regime to ensure the effectiveness of their cyber security measures.

Through these actions, the firm has transitioned from a reactive approach to a proactive, strategic focus on cyber security, enhancing their resilience against potential threats.

## CONCLUSION

This case demonstrates how a Cyber Health Check Service can help organisations identify gaps, align with best practices and build a strong foundation for ongoing cyber resilience.

**If your organisation faces similar challenges, Cyber Collab can provide tailored solutions to meet your needs.**



**Contact us today.**

**Chris Watson**  
CEO

**T:** +61 7 3544 4700

**M:** +61 (0) 437 634 077

[chris.watson@cybercollab.au](mailto:chris.watson@cybercollab.au)